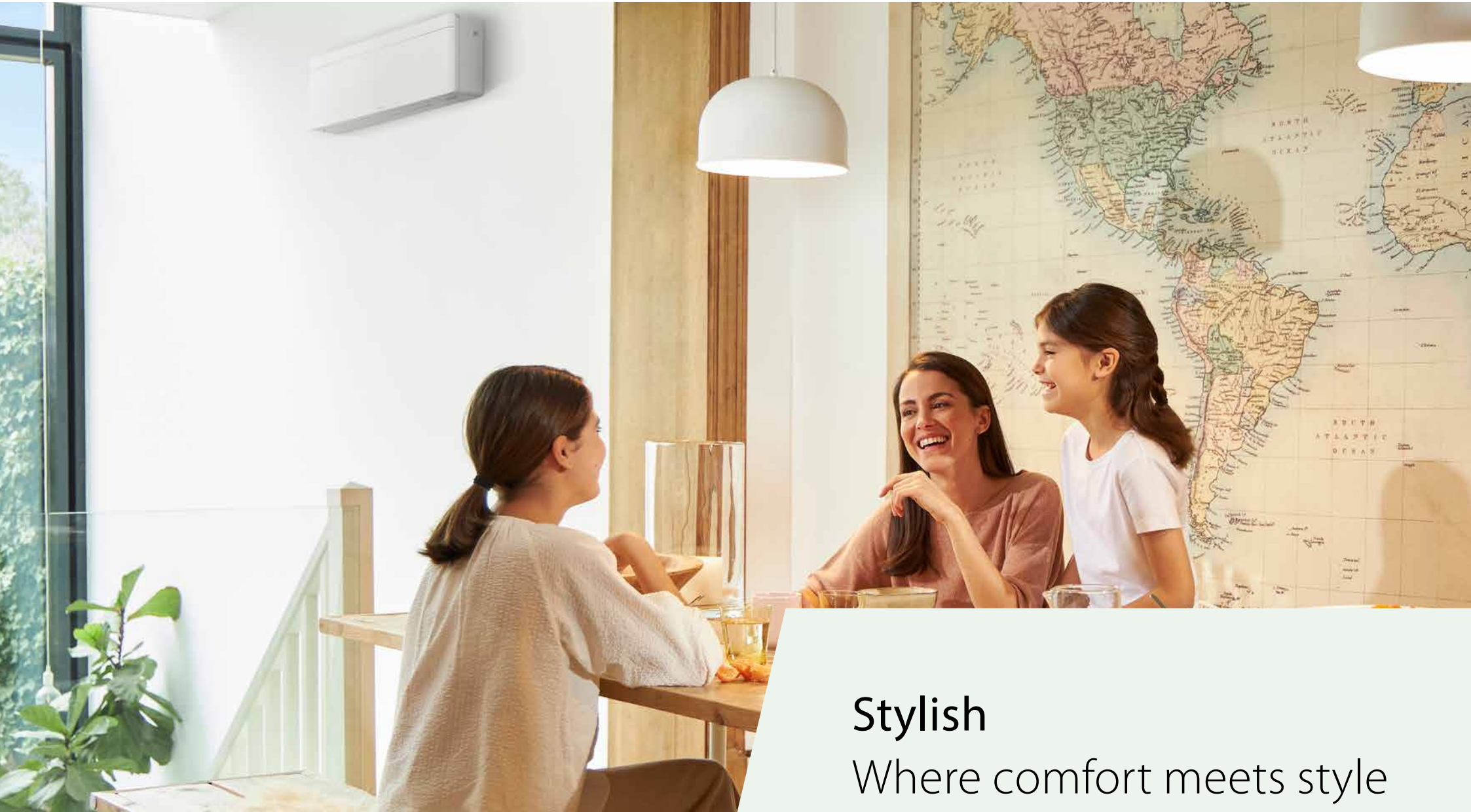




stylish



Stylish

Where comfort meets style

Stylish wall-mounted unit

Designed for comfort

With more than 100 years of experience in climate control solutions, Daikin combines the best of design and technology to help you achieve your perfect climate. Daikin Stylish is a premium wall-mounted air-to-air heat pump designed to blend seamlessly into modern living spaces.

Why choose Stylish?

Stylish brings together refined design and advanced technology to deliver a complete climate solution for any interior. With a depth of only 189 millimetres, Stylish is one of the slimmest units in its class and uses innovative features to achieve high levels of comfort, energy efficiency, reliability and control.

Up to  heating & cooling

Award-winning design

Stylish has received multiple international design awards, recognising its innovative appearance, functional performance and contribution to comfort and energy efficiency.



reddot award 2018
winner



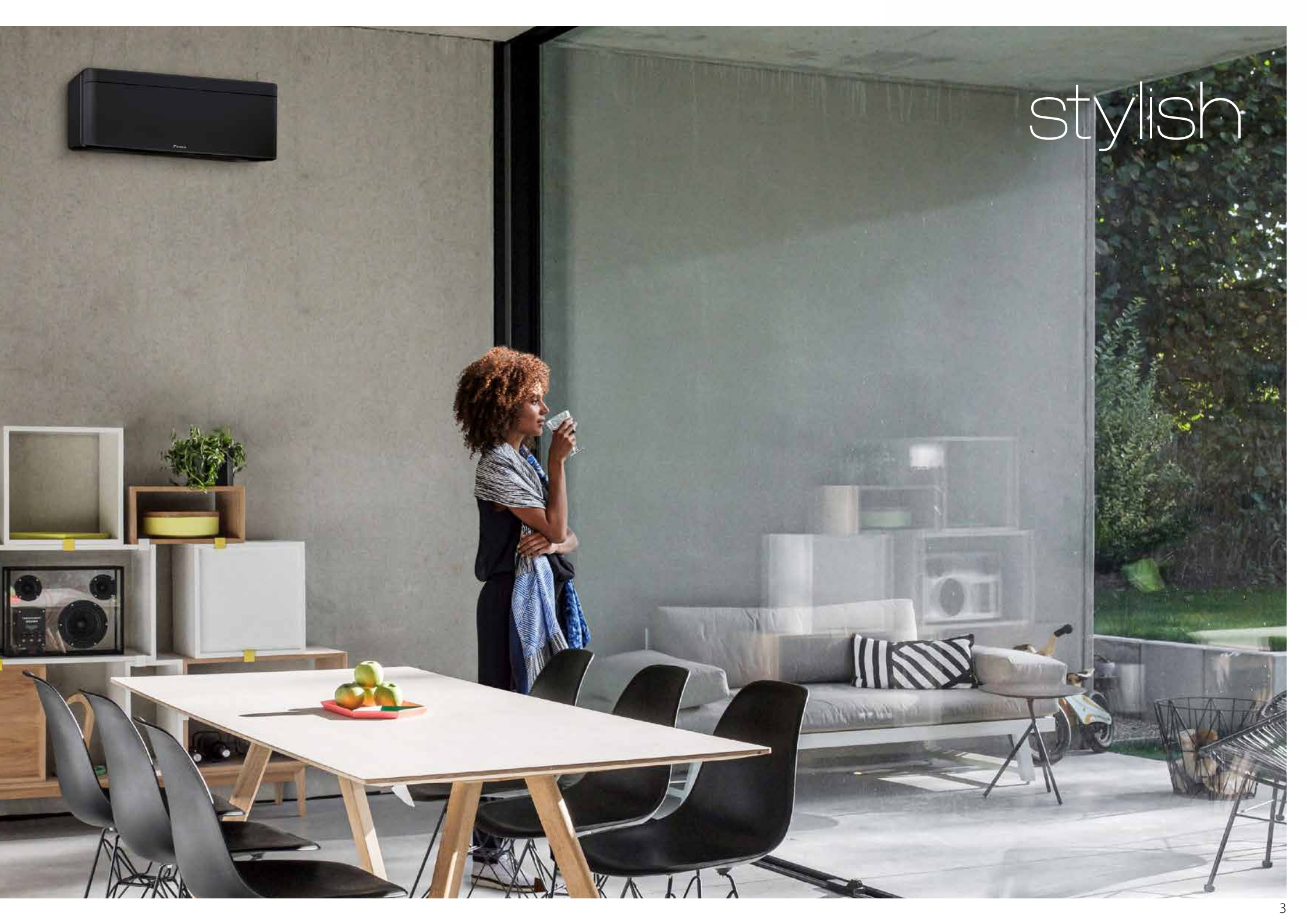
DESIGN
AWARD
2018



GOOD DESIGN
AWARD 2017



stylish



Designed to blend quietly into every interior

Stylish now offers eight design options

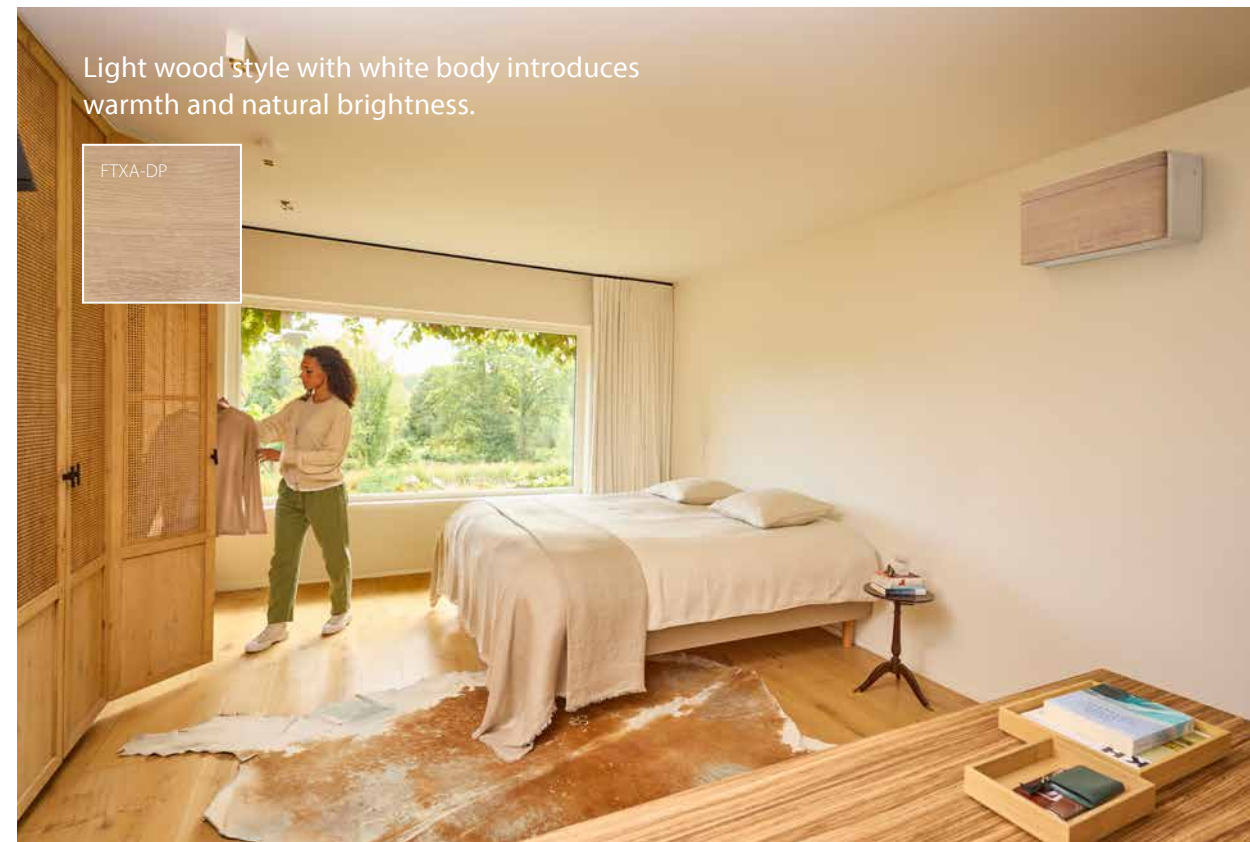


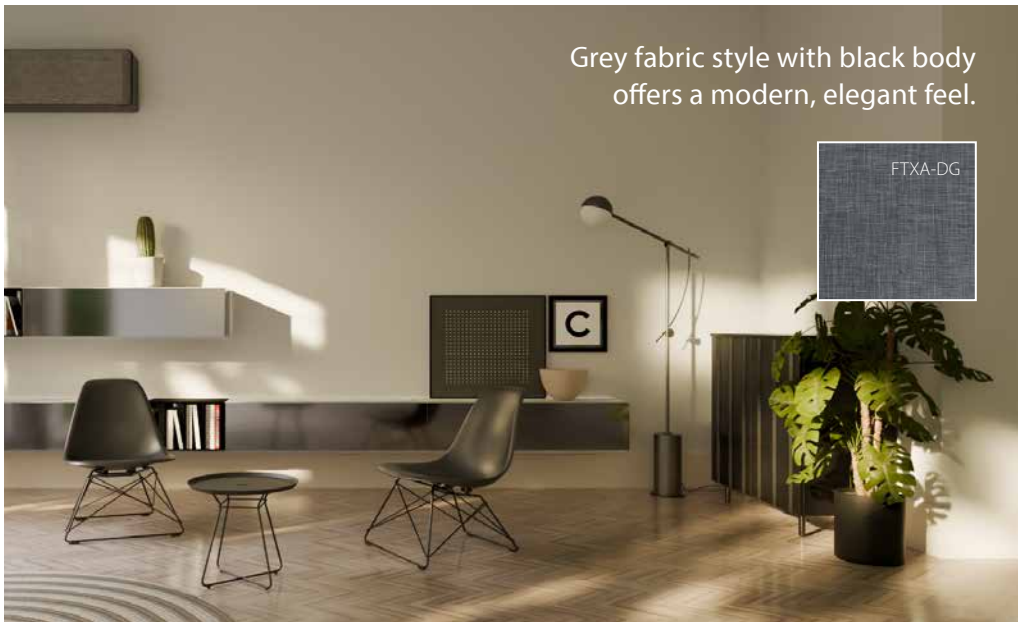
Choosing an air-to-air heat pump system today is about more than performance alone. It's about finding a solution that feels right in your home. With Stylish, Daikin brings function and aesthetics together in one refined design, creating an innovative product that settles naturally into any interior.

The five new front panels, combined with fixed body colours, bring a wide range of interior styles to life.

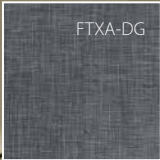
Together with the existing white, silver and black body colours, Stylish now offers a carefully curated palette of eight design options. From light wood finishes with a natural, tactile feel to bold, eclectic spaces, there's a Stylish look that feels at home in every interior.

The five new front panel styles feature fixed body colours and are not detachable. Finishes are designed to resemble natural textures and are not made from actual wood, leather, or fabric.

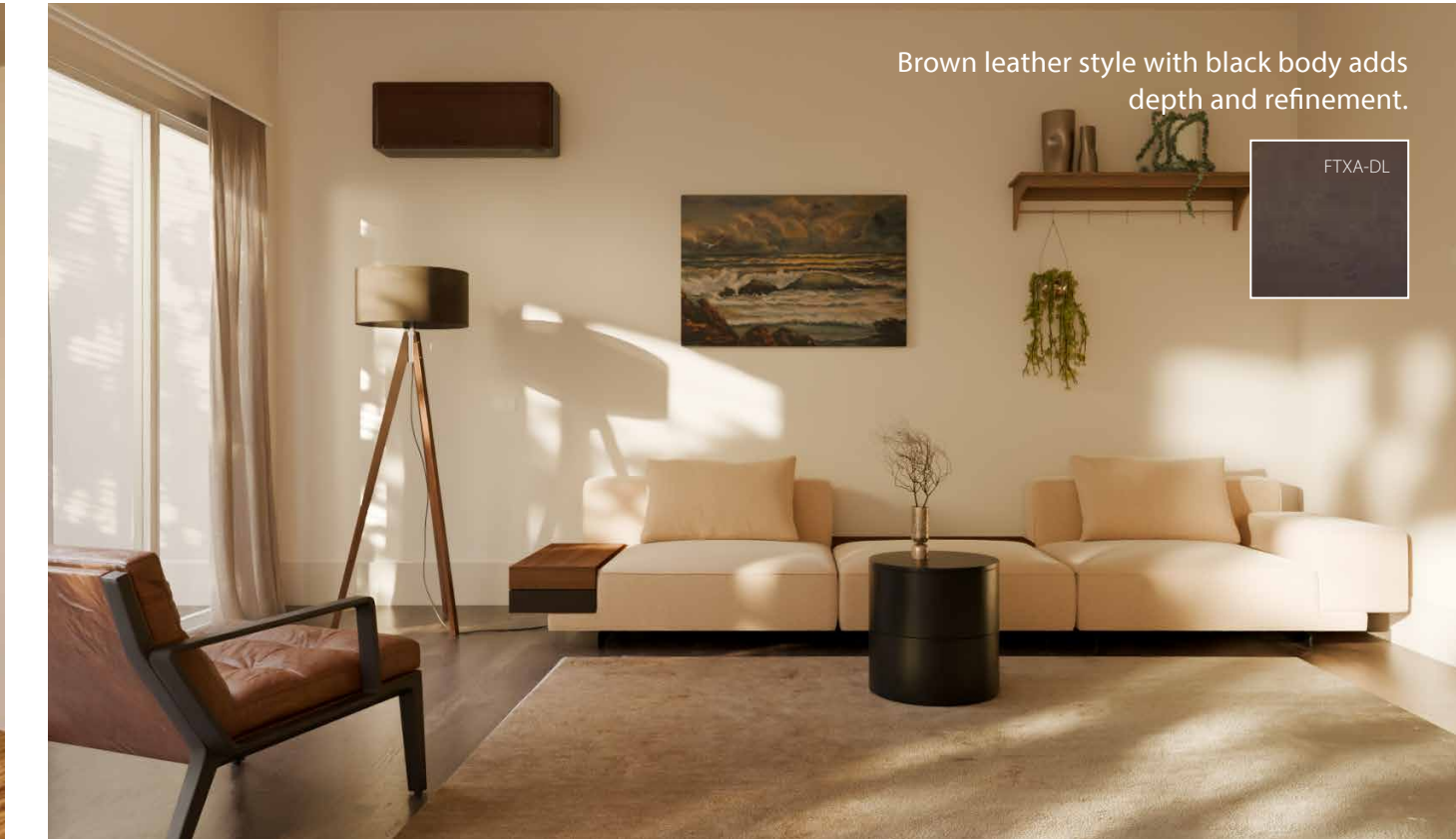




Grey fabric style with black body offers a modern, elegant feel.



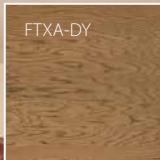
Colourful fabric style with white body lends a cheerful, expressive touch.



Brown leather style with black body adds depth and refinement.



Oak wood style with black body brings a rich, timeless, premium look.





Colourful fabric style with white body
FTXA-DC



Oak wood style with black body
FTXA-DY



Grey fabric style with black body
FTXA-DG



Light wood style with white body
FTXA-DP

A close-up photograph of a dark brown, leather-textured surface, likely a book cover or folder, with a black body. The DAIKIN logo is embossed on the leather surface. The logo consists of a stylized 'D' symbol followed by the word 'DAIKIN' in a bold, sans-serif font. The lighting is soft, highlighting the texture of the leather and the sharp edges of the black body.

DAIKIN

Dark brown leather style with black body
FTXA-DL

Comfort you feel

A closer look inside Stylish

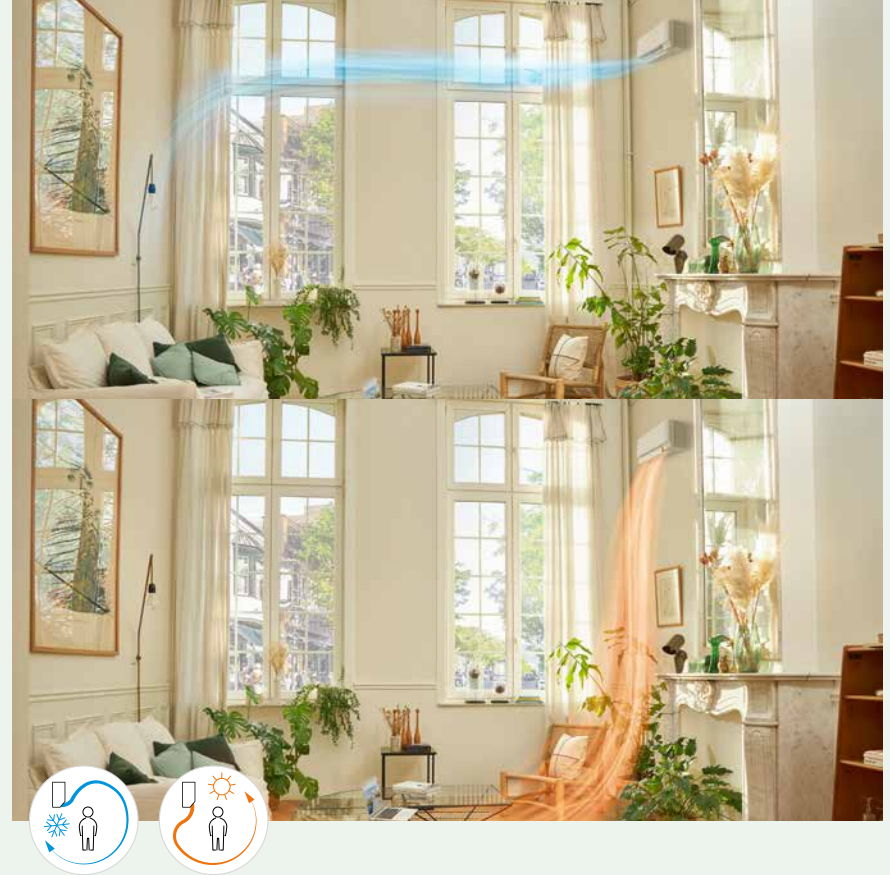
Intelligent thermal sensor

Stylish uses an intelligent thermal sensor to measure the surface temperature of a room and create a more balanced indoor climate.

Once the overall temperature is assessed, air is first distributed evenly throughout the space. The system then adjusts airflow to direct heating or cooling precisely where it is needed.



The intelligent thermal sensor divides the room into a grid of 64 zones to detect temperature differences across surfaces.



Coanda effect

The Coanda effect shapes airflow to create a naturally comfortable indoor climate. Specially designed louvres guide air in a more controlled way, ensuring an even temperature distribution throughout the room.

Depending on whether heating or cooling is required, Stylish automatically adjusts its airflow pattern. In heating mode, warm air is directed downward through vertical airflow. In cooling mode, air is guided upward along the ceiling to circulate gently through the space.

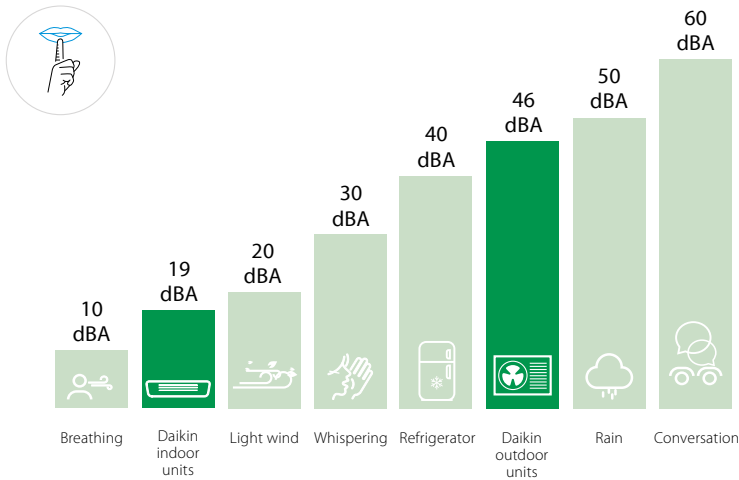
By alternating between these two airflow patterns, Stylish avoids draughts and maintains a stable, pleasant room temperature at all times.

In cooling mode, the Coanda effect guides airflow along the ceiling. In heating mode, air is directed downward to warm the living space evenly.

Quiet operation

Comfort is most enjoyable when it remains subtle. Stylish achieves this through a fan that optimises airflow efficiency while keeping sound levels exceptionally low.

With operation sound pressure levels down to 19 dBA in indoor units and down to 46 dBA in outdoor units, you can rest assured that it's peaceful both inside and out.



Clean air

1. Flash streamer:

Electrons trigger chemical reactions with airborne particles, reducing allergens such as pollen and fungal spores, neutralising odours and improving overall air quality.

2. Titanium apatite deodorising filter:

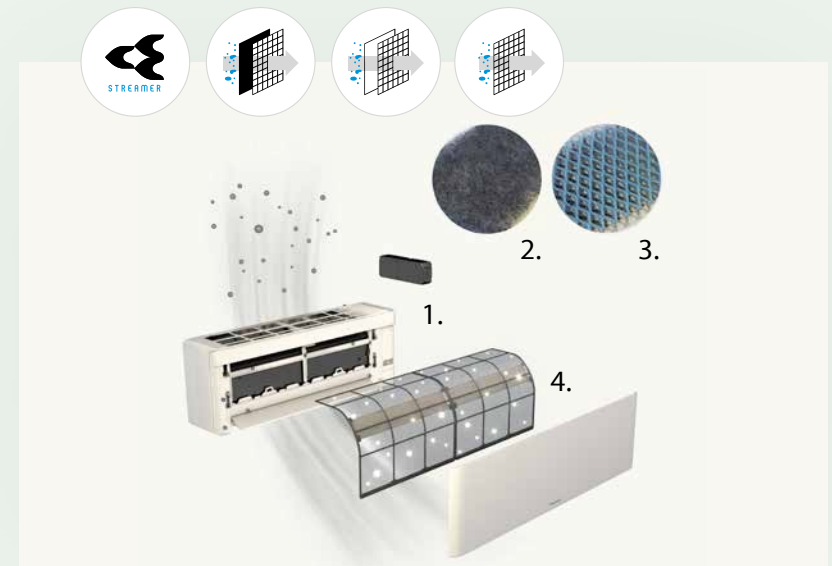
Helps reduce persistent smells such as tobacco smoke and pet odours.

3. Silver allergen removal filter:

Captures allergens like pollen, supporting a consistent supply of clean indoor air.

4. Static air filter:

Treated with an active (Ionpure) substance to help capture and reduce bacteria and viruses.



Smart control and peace of mind wherever you go

Connected control with Daikin Onecta app



Stylish gives you control over your indoor climate, even when you're not at home. As standard, the unit connects seamlessly with the Daikin Onecta app, allowing you to manage temperature, airflow and operating modes directly from your smartphone or tablet. You can:

- Adjust temperature and operating modes remotely.
- Monitor energy consumption in a clear, visual way.
- Create schedules that match your daily life.

All via one intuitive interface, designed to keep control simple and accessible.



Extra reassurance via Daikin Cloud Service Residential



For homeowners who want additional peace of mind, Stylish can be connected to Daikin Cloud Service Residential.

This service enables remote monitoring by your installer, allowing potential issues to be detected early. As a result, diagnostics are faster, interventions are more efficient and maintenance costs can be reduced. It is a discreet layer of support that works quietly in the background, long after installation.



Technical table

		CTXA15-C/D		FTXA20-C/D + 20A8	FTXA25-C/D + 25A8	FTXA35-C/D + 35A8	FTXA42-C/D + 42B8	FTXA50-C/D+ 50B8
Seasonal efficiency (according to EN14825) FTXA + RXA	Cooling capacity	Min./Nom./Max. (kW)		1.30/2.00/2.60	1.30/2.50/3.20	1.40/3.40/4.00	1.7/4.2/5	1.7/5/5.3
	Heating capacity	Min./Nom./Max. (kW)		1.30/2.50/3.50	1.30/2.80/4.70	1.40/4.00/5.20	1.7/5.4/6	1.7/5.8/6.5
	Energy label	Cooling/ Heating		A++ / A+			A++ / A+	
	Pdesign	Cooling/ Heating (kW)		2.00/2.40	2.50/2.45	3.40/2.50	4.20/3.80	5.00/4.00
	SEER	Cooling		8.75	8.74	8.73	7.5	7.33
	SCOP	Heating		5.15	5.15	5.15	4.6	4.6
	Annual energy consumption	Cooling/Heating (kWh/a)		80/652	100/666	136/680	196/1,156	239/1,1218

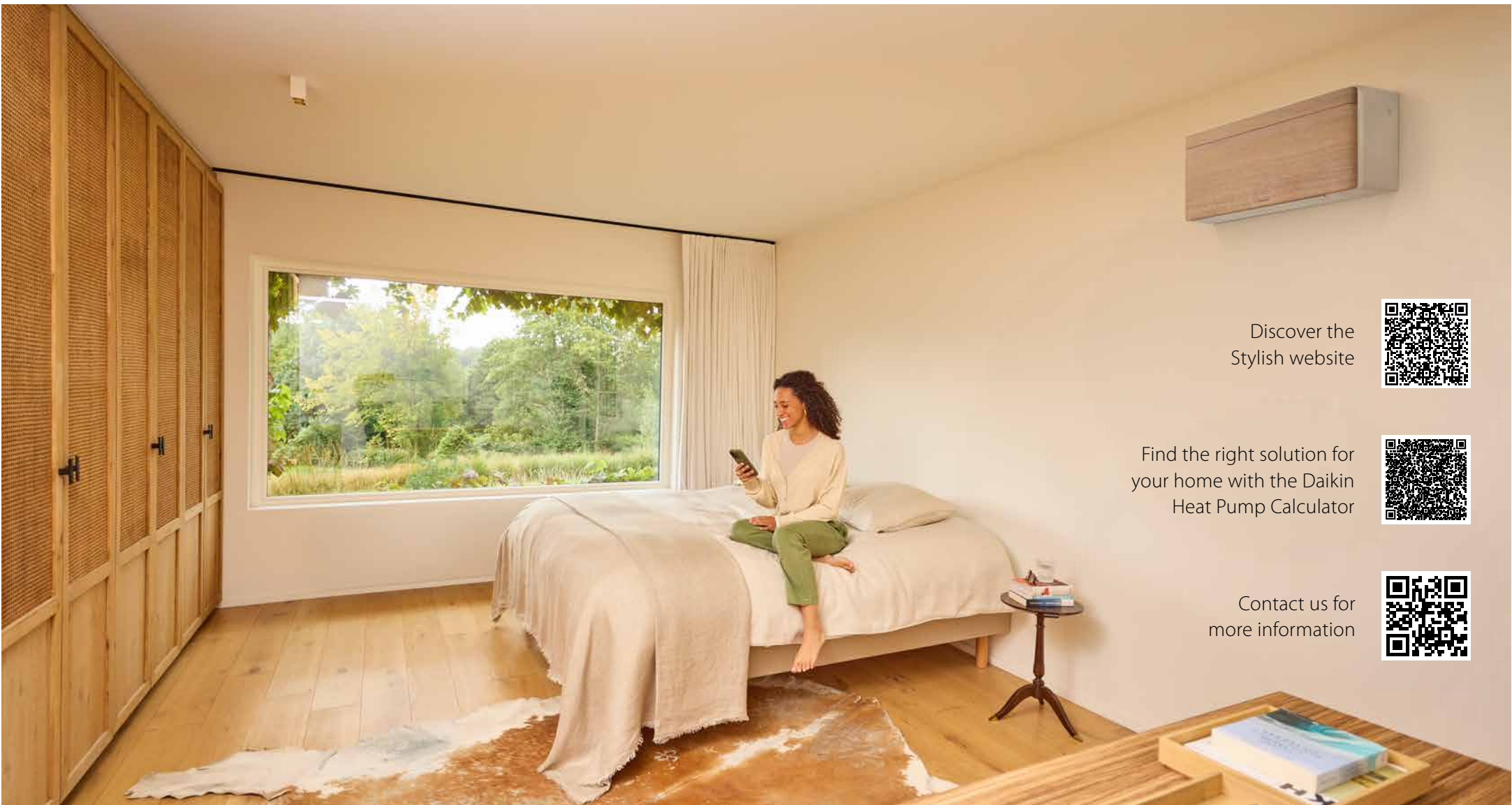
		CTXA15-C/D		FTXA20-C/D	FTXA25-C/D	FTXA35-C/D	FTXA42-C/D	FTXA50-C/D
Indoor Unit FTXA	Dimensions	H x W x D (mm)		295x798x189				
	Sound power level	Cooling (dBA)		57	57	57	60	60
	Sound pressure level	Cooling (dBA)	Silent/Low/High	21/25/39	19/25/39	19/25/40	19/25/41	21/29/45
Heating (dBA)		21/25/39		19/25/39	19/25/40	19/25/41	21/29/45	24/33/46

				20A8	25A8	35A8	42B8	50B8	
Outdoor Unit RXA	Sound power level	Cooling/Heating (dBA) Nom		59.0/59.0	59.0/59.0	61.0/61.0	62.0/62.0	62.0/62.0	
	Sound pressure level	Cooling/Heating (dBA) Nom		46.0/47.0	46.0/47.0	49.0/49.0	48.0/48.0	48.0/48.0	
	Operation Range	Cooling Min.~Max. (°CDB) Ambient		Connectible to multi outdoor unit only			-10~46		
		Heating Min.~Max. (°CDB) Ambient					-15~24		
	Piping connections	Liquid OD (mm)					6.35		
Gas OD (mm)					9.50		12.7		

Connectible indoor units (C/FTXA-C/D) with Multi-split outdoors

Capacity class	2-port multi			3-port multi			4-port multi		5-port multi	4/5 port Multi+		
	2MXM40A9	2MXM50A8	2MXM68A8	3MXM40A8	3MXM52A8	3MXM68A8	4MXM68A8	4MXM80A8	5MXM90A8	4MWM52A9	5MWM68A9	5MWM90A9
15	•	•	•	•	•	•	•	•	•	•	•	•
20	•	•	•	•	•	•	•	•	•	•	•	•
25	•	•	•	•	•	•	•	•	•	•	•	•
35	•	•	•	•	•	•	•	•	•	•	•	•
42		•	•		•	•	•	•	•	•	•	•
50		•	•		•	•	•	•	•	•	•	•

Note: Contains fluorinated greenhouse gases
Refrigerant type: R-32 | GWP: 675.0



Discover the
Stylish website



Find the right solution for
your home with the Daikin
Heat Pump Calculator



Contact us for
more information



Daikin Airconditioning UK Limited The Heights Brooklands Weybridge Surrey KT13 0NY Tel: 01932 879000 daikin.co.uk



Printed on non-chlorinated paper.
ECPEN26-014 02/2026



The present publication is drawn up by way of information only and does not constitute an offer binding upon Daikin UK. Daikin UK has compiled the content of this publication to the best of its knowledge. No express or implied warranty is given for the completeness, accuracy, reliability or fitness for particular purpose of its content and the products and services presented therein. Specifications are subject to change without prior notice. Daikin UK explicitly rejects any liability for any direct or indirect damage, in the broadest sense, arising from or related to the use and/or interpretation of this publication. All content is copyrighted by Daikin UK.

