



stylish

where innovation meets creativity



Stylish wall mounted unit

Designed for comfort

With more than 95 years of experience in air conditioning and climate control solutions, Daikin combines the best of design and technology to help you achieve your perfect climate. To meet market demands, Daikin is proud to present a new edition to the wall mounted segment: Stylish.

Why choose Stylish?

Stylish brings together excellent design and technology to deliver a total climate solution for any interior. Measuring only 189mm deep, Stylish can blend into any interior with its discreet, elegant lines. Utilising innovative features to achieve the best in comfort, energy efficiency, reliability and control.

Award-winning design

Inspired by its predecessors, Daikin Emura and Ururu Sarara, Stylish earned the Good Design Award for its innovative look and functional capabilities. This award also recognises Stylish for its ability to achieve new standards of comfort and energy efficiency in the HVAC-R industry.



reddot award 2018
winner



GOOD DESIGN
AWARD 2017



stylish

Technology meets design for a premium climate solution

Most consumers today are looking for an air conditioning system that combines the best of performance and design.

With Stylish, Daikin balances function and aesthetic to create an innovative product that suits any interior.



Side view



Top view

Stylish design benefits

- › Users can choose from **three distinct colours** (white, silver and black)
- › **Curved corners** create an unobtrusive and space-saving design
- › **Thin dimensions** make it the most compact design unit on the market
- › Simple panel enables variation in texture and colour to easily blend into any room



Bottom view

Intelligent and efficient design

- › Smart sensors optimise performance
- › Coanda effect optimises room temperature distribution
- › Improved fan offers high-efficiency with low sound levels
- › Advanced technology achieves more comfort and energy efficiency

WHITE



SILVER



BLACK



Available in 3 colours:
white, silver and black

A closer look inside Stylish, and the technologies at work

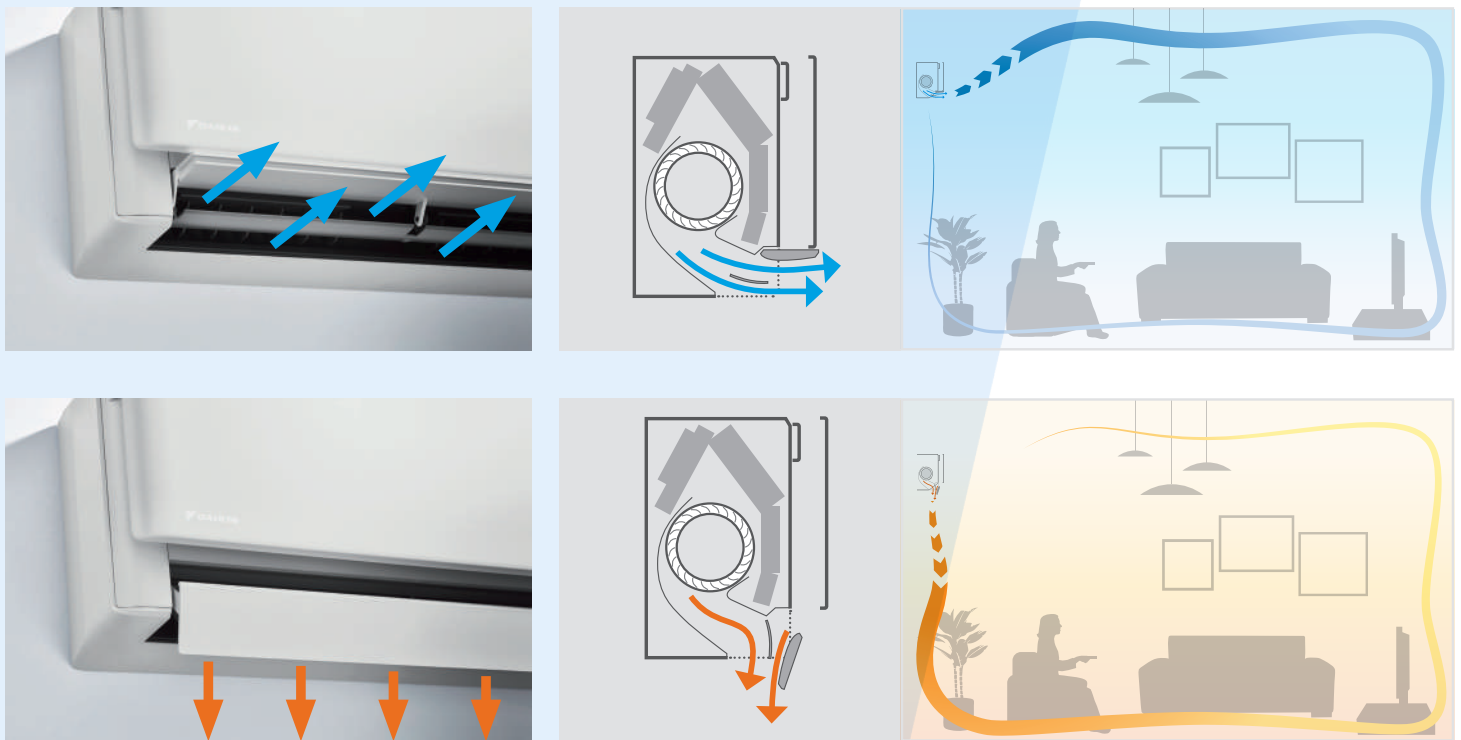
The Coanda effect

Already present in the Ururu Sarara, the **Coanda effect** optimises the airflow for a comfortable climate. By using specially designed louvres, a more focused airflow allows a better temperature distribution throughout the whole room.

How it works

Stylish determines the airflow pattern based on whether the room needs heating or cooling. When Stylish is in heating mode, two louvres will direct air downward (vertical airflow), while in cooling mode the louvres will move air upward (ceiling airflow). By creating two different airflow patterns, Stylish prevents draughts and establishes a more stable and comfortable room temperature for occupants.

3D Airflow uses the vertical and horizontal auto-swing capability to circulate a stream of warm or cool air to all areas, including the corners of a space



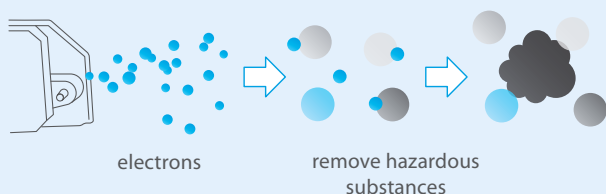
The Coanda effect creates two different airflow patterns depending on whether Stylish is in cooling or heating mode. The top is the Coanda effect in cooling mode (ceiling airflow), while the bottom images demonstrate the Coanda effect in heating mode (vertical airflow).

Air quality

Flash streamer: using electrons to trigger chemical reactions with airborne particles, the Flash Streamer removes allergens such as pollen and fungal allergens, eliminating unpleasant odours and providing better, cleaner air.

NEW

Static air filter: The new air filter has been treated with an active (lonpure) substance in order to capture, reduce and remove bacteria and viruses.



Controlled humidity

Comfort is not only related to indoor air quality or temperature; it's also about humidity. Stylish can use various different settings to automatically adjust its fan and compressors to create the right **balance between temperature and humidity** for a room.

Fresh, pure air

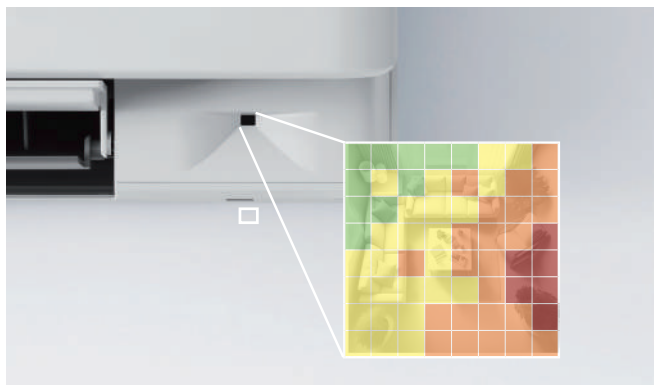
The **different type of filters** remove odours, allergens and dust.

		Odours	Allergens	Dust
Flash streamer	Using electrons to trigger chemical reactions with air borne particles, the Flash Streamer breaks down allergens such as pollen and fungal allergens and removes bothersome odours providing a better, cleaner air	•	•	
Titanium apatite deodorising filter	Decomposes bothersome odours of for example tobacco and pets	•		
Silver allergen removal and air purifying filter	Captures allergens such as pollen to ensure a steady supply of clean air		•	
Air filter	Removes airborne dust particles to ensure a steady supply of clean air			•

Stable room temperatures

Stylish uses a **intelligent thermal sensor** to detect the surface temperature of a room to create a more comfortable climate.

After determining the current room temperature, the intelligent thermal sensor distributes air evenly throughout the room before switching to an airflow pattern that directs warm or cool air to areas that need it.

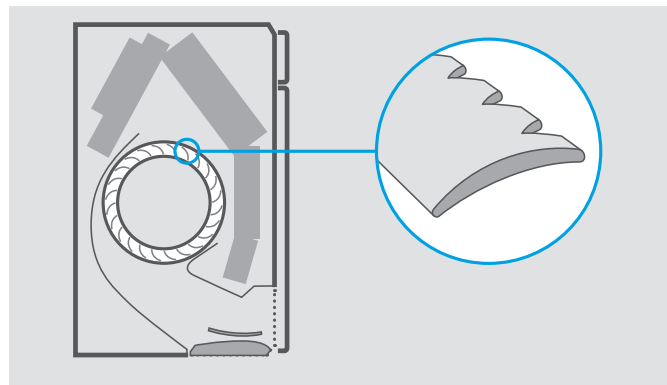


Stylish utilises an intelligent thermal sensor, dividing your space into a 64 grid and measuring each square individually for temperature. This data is used to allow Stylish to direct conditioned air wherever it is needed for the most even temperature possible.

Quiet operation

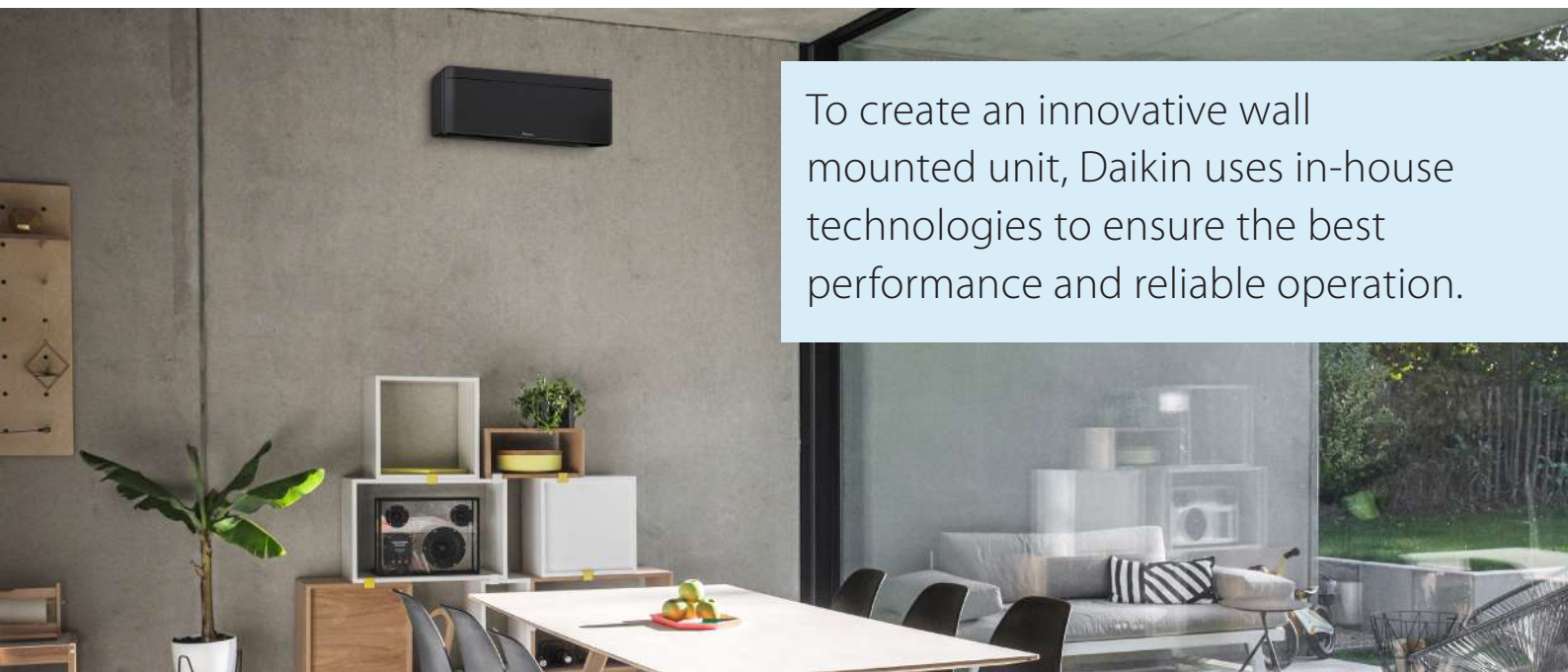
Stylish uses a **newly designed fan** to optimise airflow for higher energy efficiency at low sound levels.

To achieve higher energy efficiency, Daikin designed a new fan that runs efficiently within Stylish's compact dimensions. Together, the fan and heat exchanger attain top energy performance but operate at a sound level that is practically inaudible to occupants.



Sound dispersion and noise reduction are the results of new fan design.

To create an innovative wall mounted unit, Daikin uses in-house technologies to ensure the best performance and reliable operation.





Smart climate control

wherever you go



Onecta app

You can also manage Stylish using your smartphone. Simply connect to WLAN and download the Onecta app to begin creating your perfect climate.

Your benefits

- › Access several features to control your climate
- › Manage the temperature, operating mode, air purification and fans with interactive thermostat
- › Create different schedules and operation modes
- › Monitor energy consumption

Infrared remote control

The Infrared remote control allows you to manage Stylish and optimise its performance.

Your benefits

- › Intuitive interface makes controlling your climate easy
- › Keep track of energy consumption with visual display graphs
- › Contemporary and lightweight design matches Stylish features

Control your system and enjoy maximum comfort, just by using your voice. Via Amazon Alexa or Google Assistant you can control main functions such as temperature set point, operation

Functional and stylish

for any space

Available in 3 matt colours:
white, silver and black



White: FTXA-A-CW



Silver: FTXA-CS



Black: FTXA-CB

Stylish advantages

- › A compact and functional design suitable for all interiors
- › Earns A+++ for heating and cooling
- › Achieves higher energy efficiency and lower environmental impact with refrigerant R-32
- › New technologies create ideal room temperatures
- › Enhanced fan ensures the unit is inaudible
- › Easily controlled with Onecta app
- › Flash Streamer technology provides fresh, healthy air

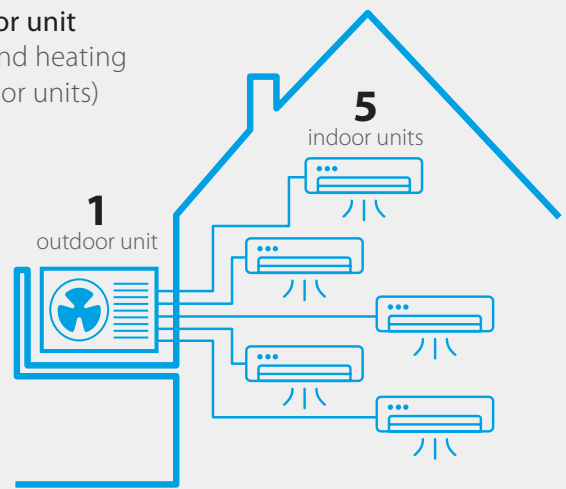


BLUEEVOLUTION

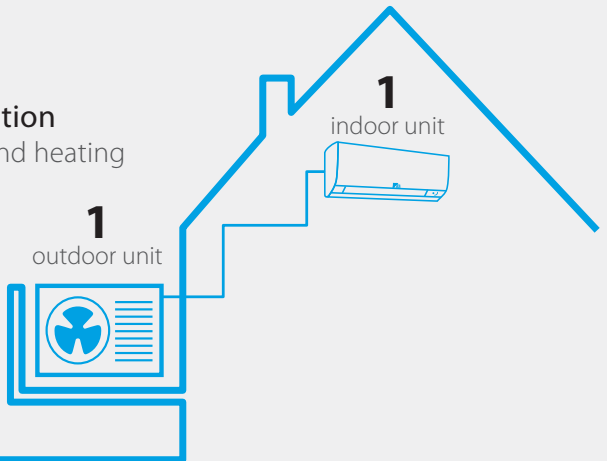
Less is more!

A Daikin multi split system offers you unexpected possibilities in creating a comfortable and cosy home. This is your solution to reduce limitations like environmental impact and financial aspects. **You can choose**

Multi outdoor unit
for cooling and heating
(up to 5 indoor units)



Pair application
for cooling and heating



Pair outdoor unit



NEW
Design multi outdoor unit for the full range

Indoor Units	White (RAL 9002)		CTXA15CW	FTXA20CW	FTXA25CW	FTXA35CW	FTXA42CW	FTXA50CW
	Black (RAL 9005)		CTXA15CB	FTXA20CB	FTXA25CB	FTXA35CB	FTXA42CB	FTXA50CB
	Silver (RAL 9006)		CTXA15CS	FTXA20CS	FTXA25CS	FTXA35CS	FTXA42CS	FTXA50CS
Capacity	UK Total Cooling	kW	Multi Combination Only	1.95	2.44	3.32	4.11	4.89
	UK Sensible Cooling	kW		1.95	1.96	2.43	3.01	3.56
	Nominal Cooling	kW		2.0	2.5	3.4	4.2	5.0
	Nominal Heating	kW		2.5	2.8	4.0	5.4	5.8
Seasonal Efficiency (EN14825) COOLING	Energy Label			A+++	A+++	A+++	A++	A++
	Pdesign	kW		2.0	2.5	3.4	4.2	5.0
	SEER			8.75	8.74	8.73	7.50	7.33
	Annual Energy Consumption	kWh		80	101	136	196	239
Seasonal Efficiency (EN14825) HEATING	Energy Label			A+++	A+++	A+++	A++	A++
	Pdesign	kW		2.40	2.45	2.50	3.80	4.00
	SCOP			5.15	5.15	5.15	4.6	4.6
	Annual Energy Consumption	kWh		652	666	680	1150	1217
Air Flow Rate (Cooling)	High / Med / Low / Silent	m ³ /min	11.0 / 8.2 / 6.1 / 4.6	11.0 / 8.2 / 6.1 / 4.6	11.5 / 8.6 / 6.1 / 4.6	11.9 / 8.6 / 6.1 / 4.6	13.1 / 9.8 / 7.2 / 4.6	13.5 / 10.4 / 7.6 / 5.2
Dimensions	Height / Width / Depth	mm	295 x 798 x 189	295 x 798 x 189	295 x 798 x 189	295 x 798 x 189	295 x 798 x 189	295 x 798 x 189
Weight		kg	12	12	12	12	12	
Sound Pressure (Cooling)	High / Med / Low / Silent	dBA	39 / 32 / 25 / 21	39 / 32 / 25 / 19	40 / 33 / 25 / 19	41 / 33 / 25 / 19	45 / 37 / 29 / 21	46 / 39 / 31 / 24
Sound Power (Cooling)		dBA	57	57	57	60	60	60

Outdoor Units			RXA20A8	RXA25A8	RXA35A8	RXA42B8	RXA50B8
Dimensions	Height x Width x Depth	mm	550 x 840 x 350	550 x 840 x 350	550 x 840 x 350	734 x 870 x 373	734 x 870 x 373
Weight		kg	32	32	32	50	50
Electrical Details	Power Supply		1ph	1ph	1ph	1ph	1ph
	Maximum Input Current (MCA)	A	9.88	11.17	12.29	12.8	12.8
	Max Fuse Size	A	10	13	13	16	16
	Core / Cable Size		3+E / 1.5	3+E / 1.5	3+E / 1.5	3+E / 1.5	3+E / 1.5
Piping Connections	Liquid / Gas	inches (mm)	1/4 (6.4) / 3/8 (9.5)	1/4 (6.4) / 3/8 (9.5)	1/4 (6.4) / 3/8 (9.5)	1/4 (6.4) / 3/8 (9.5)	1/4 (6.4) / 1/2 (12.7)
Pipework	Maximum Length	m	20	20	20	30	30
	Maximum Vertical Rise	m	15	15	15	20	20
	Precharged to	m	10	10	10	10	10
	Additional charge	g/m	20	20	20	20	20
	Holding charge	kg	0.76	0.76	0.76	1.1	1.1
Sound Pressure (Cooling)	Nominal	dBA	46	46	49	48	48
Sound Power (Cooling)		dBA	59	59	61	62	62
Operating Range (Cooling)	Min / Max	°CDB	-10 / 46	-10 / 46	-10 / 46	-10 / 46	-10 / 46
Operating Range (Heating)	Min / Max	°CWB	-15 / 18	-15 / 18	-15 / 18	-15 / 18	-15 / 18
Air Flow Rate (Cooling)	Nominal	m ³ /min	34.0	34.0	36.0	46.6	46.6
Meets ETL criteria			•	•	•	•	•

Accessories:

Accessory Ref	Description
EKR521	Wire harness for new S21 port for all marked (*) options
BRC073*	Wired remote control - connection cable required
BRCW901A03	3m extension cord required for wired remote controller BRC073
BRCW901A08	8m extension cord required for wired remote controller BRC073
K.CGM	Condensing unit guard (1150 x 1150 x 650)
K.CGS	Condensing unit guard (750 x 1050 x 460)
K.CWB90-2	Wall bracket (90kg, 500mm support arm)
K.DT1	Condensate drip tray for use with K.CWB90-2
K.FF600S	Two flexi-feet (Standard 600mm x 185mm x 100mm) to mount the outdoor unit
KLIC-DDV3*	KNX interface for Split type systems
KRP413A1S*	Adaptor PCB for remote on/off control - constant/pulse contact
KRP928A2S*	Adaptor PCB for interface to Daikin centralised control systems
RTD-RA*	Adaptor PCB for Modbus connection and/or extended system functions

Notes & Features:

- All fan coils are supplied with infrared remote controller ARC466A85
- Fan with Coanda effect for optimum air distribution and indoor comfort
- Grid eye sensor redirects air away from the occupants in the room
- Flash Streamer technology helps improve indoor air quality
- Antibacterial Filter for effectively arresting small particulates

Connectable Indoor Units		Multi (cooling and heating)								
		2MXM40A9	2MXM50A9	2MXM68A9	3MXM40A9	3MXM52A9	3MXM68A9	4MXM68A9	4MXM80A9	5MXM90A9
Wall mounted	CTXA-AW/BS/BB	15	•	•	•	•	•	•	•	•
		20	•	•	•	•	•	•	•	•
		25	•	•	•	•	•	•	•	•
	FTXA-AW/BS/BB	35	•	•	•	•	•	•	•	•
		42	•	•	•	•	•	•	•	•
		50	•	•	•	•	•	•	•	•



Have a look at the Stylish video



Discover the Stylish website



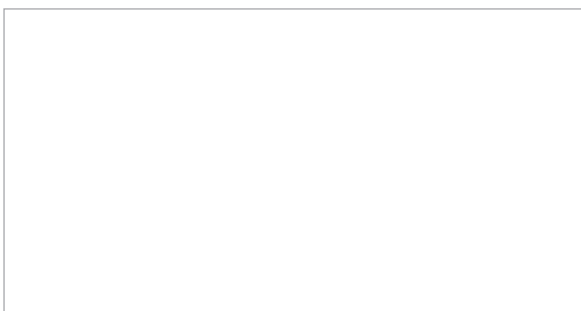
Visualise the Stylish unit in your own house with the 3D app



Contact us for more information



Daikin Airconditioning UK Limited The Heights Brooklands Weybridge Surrey KT13 0NY Tel 01932 879000 daikin.co.uk



ECPEN25-008 07/2025



The present leaflet is drawn up by way of information only and does not constitute an offer binding upon Daikin UK. Daikin UK has compiled the content of this leaflet to the best of its knowledge. No express or implied warranty is given for the completeness, accuracy, reliability or fitness for particular purpose of its content and the products and services presented therein. Specifications are subject to change without prior notice. Daikin UK explicitly rejects any liability for any direct or indirect damage, in the broadest sense, arising from or related to the use and/or interpretation of this leaflet. All content is copyrighted by Daikin UK.

Printed on non-chlorinated paper.